

PLAN, PLANT & PROTECT TREES

Keeping trees away from power lines promotes tree health and prevents service outages.

PLAN A SAFE LOCATION FOR YOUR TREE

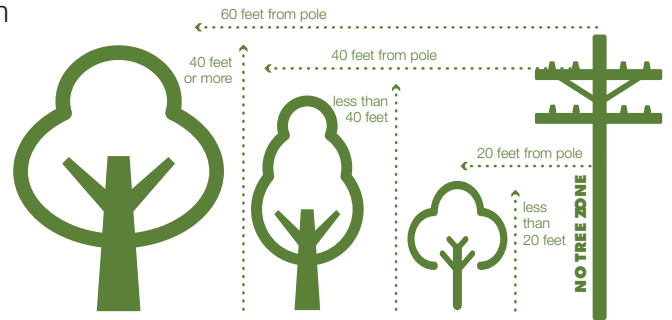
Before planting trees on your property, call 811. By law, you must call 811 to have underground utilities marked at least two full working days before digging.

Next, look around and look up to check for power lines and utility boxes to ensure you plant trees a safe distance away. Consider how big the tree will grow as it matures before deciding where to plant it. If you do not know how large a tree will grow, consult your local tree nursery, landscaper, arborist or cooperative extension service for assistance.

PLANT THE RIGHT TREE IN THE RIGHT PLACE

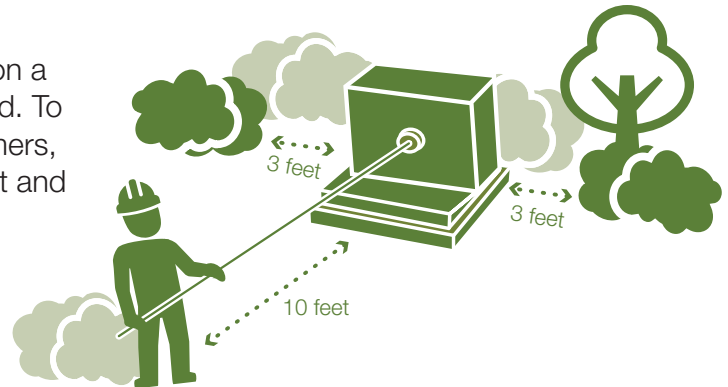
Use these guidelines to plant trees a safe distance away from power lines:

- ▶ **Small trees** (under 20 feet at maturity) — These are the only trees that are safe to plant within 20 feet of a utility pole.
- ▶ **Medium trees** (between 25-40 feet at maturity) — These should be planted over 40 feet away from a utility pole.
- ▶ **Large trees** (40 feet or larger at maturity) — These should be planted over 60 feet away from a utility pole.



KEEP ACCESS TO TRANSFORMERS CLEAR

Transformers are green metal utility boxes mounted on a small concrete or fiberglass pad in your neighborhood. To allow our crews space to work inside these transformers, do not plant shrubs or trees within 10 feet of the front and 3 feet of the sides of the box.



PROTECT TREES NEAR POWER LINES WITH MIDAMERICAN'S PRUNING SERVICES

We provide pruning services to keep lines clear as part of your electric service at no additional cost.

MidAmerican will contact you in advance via letter, email and/or automated phone call before pruning trees in your area. If branches are already touching or close to power lines, we may need to enter the property quickly and without notice to prevent an emergency. As a utility, agreements with your state grant us the right to access our power lines for maintenance.

Pruning information

888-427-5632

trees@MidAmerican.com

Power out

800-799-4443

Gas leak

800-595-5325

MidAmericanEnergy.com



PROTECTING OUR SYSTEMS, **PROTECTING OUR ENVIRONMENT**

SAFETY AND PROFESSIONALISM

We contract certified professional utility arborists to use safe, environmentally conscious methods to keep trees and other vegetation a minimum safe distance from power lines and electric infrastructure. MidAmerican has been recognized as a Tree Line USA utility by the Arbor Day Foundation and the Iowa Department of Natural Resources for more than 20 years.

When you need to work near a power line on your property, contact us for assistance to make the area safe.

REQUIRED PRUNING SERVICES

Pruning trees near electric lines helps keep you safe and prevent power outages.

Common reasons for tree pruning include:

- ▶ The tree or other vegetation is growing close to our electrical systems, putting their safety and reliability at risk.
- ▶ Trees near power lines are dangerous to anyone climbing them.
- ▶ The tree is a fast-growing species, requiring greater clearance to compensate.

NATURAL PRUNING PROTECTS TREES

To manage tree growth near power lines, we perform natural pruning by removing a limb to the node, the point from where the limb grows from the tree.

- ▶ Making cuts at the node protects the tree naturally and prevents decay. While the node may seem far from power lines, cutting there allows the tree to heal naturally and prevents disease.
- ▶ Limbs not cut at the node pose hazards like decay and watersprouts or suckers. Watersprouts can easily break during storms, posing further risks.

If only one side of your tree has been pruned, don't be concerned about its stability. Trees are balanced and anchored by extensive underground root systems. Removing healthy limbs from the other side of the tree to balance out curb appeal can jeopardize the health of the tree.

DEBRIS REMOVAL

During scheduled pruning work, MidAmerican crews will cut and remove debris. Stumps will be cut close to the ground and treated. You can also request that we leave the chipped wood on your property.

When you request pruning services, all debris will be left. Dead tree removal and other major work is the responsibility of the property owner.

When clearing storm-damaged limbs, all debris is left. Contact your city or county forestry department for debris removal following severe storms.

LEAVE IT TO THE EXPERTS!

Pruning near power lines is dangerous and should only be completed by qualified professionals. If your local tree specialist needs to work on trees near power lines or equipment, call 888-427-5632 and a utility arborist will inspect the tree to make the area safe.



Cutting just outside the branch collar helps preserve tree health.



DIRECTIONAL PRUNING

Branches are left to grow away from wires.



EVERGREEN SIDE PRUNING

Side branches are trimmed to the branch collar of the trunk.